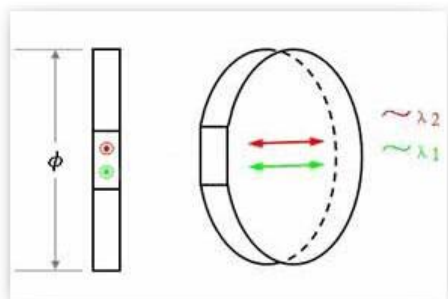


## Dual Wavelength Waveplates

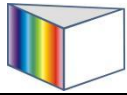
**Dual wavelength waveplates or retarders** are multiple waveplate that provide a specific retardance at two different wavelengths, it's particularly useful when used in conjunction with other polarization sensitive components to separate coaxial laser beams of different wavelength.

Hangzhou Shalom EO offers the custom **dual wavelength waveplates** upon customer's request, and the stocked modules are also available in fast delivery and low cost.



## SPECIFICATIONS

Specifications	
Material	Quartz
Wavefront Distortion	350~2100 nm,
Dimension Tolerance	+/-0.1mm
Surface Quality	20 / 10
Parallelism	<1 arc Sec
Retardation Tolerance	< $\lambda/100$
Clear Aperture	>90%
Damage Threshold	>500 MW/cm <sup>2</sup>
Coating	AR Coating
Mount	Black Anodized Aluminium



<b>Quarter Waveplates P/N#</b>	<b>Half Waveplates P/N#</b>	<b>Diameter (mm )</b>
WPD410	WPD210	10
WPD412	WPD212	12.7
WPD415	WPD215	15
WPD420	WPD220	20
WPD425	WPD225	25
WPD430	WPD230	30